

Introduction + Principles

Introduction

ASPECT Studios were commissioned by Marrickville Council in collaboration with The Miller Group to prepare a Master Plan for Sydenham Green. The scope included consultation with the local community as well as relevant stakeholders to gain an understanding of the sites current issues and to unlock potential future upgrades and new uses.

The Master Plan scope consists of a largely unprogrammed site of approximately 4.5 hectare located on Unwins Bridge Road in Sydenham. The former residential land was acquired and homes demolished in the mid 1990's due to the affects of aircraft noise from the third runway at Sydney Airport. The current park consist of a series if smaller rectangular land parcels divided by a grid of streets and laneways which reflect the former built form pattern of the neighbourhood. Although large in size, the park remains largely underutilised due to aircraft and road noise, the poor level of public amenity and lack of programme.

The proposed Master Plan for Sydenham Green provides a vision for the future upgrade of the park based on community and stakeholder feedback and the outcomes of Council's Plan of Management for the site. The plan seeks to reinvigorate Sydenham Green by increasing the site's programme of uses, upgrading current poor amenities and establishing a strong identity for the park in which the various parcels of land become stitched together.

Community Consultation

Marrickville Council commissioned the Miller Group to undertake community consultation research to provide an evidence base to underpin the development of the new Master plan and Plan of Management for Sydenham Green. This included three community consultation sessions and an on line survey which aimed to gather both community and various stakeholder opinions on the current use and future aspirations for the site.

Key comments raised by the community included:

- Toilet facilities are poor and often locked
- The Children's playground is very poor (this has since been upgraded in 2013)
- Informal grass areas were appreciated
- Safety and antisocial behaviour occurs within the site
- Maintenance is poor
- More trees for more shade and to enclose the park
- Extend dog off leash area

Design principles

The ASPECT Studios has developed a number of overarching design principles to guide the evolution of the master plan. These principles have been developed following an analysis of the current conditions and use of the site and community consultation feedback.

These design principles are outlined below:

1. Stitch Park Together

- Bring together the various land parcels that are currently divided by streets and lanes through the implementation of shared zones and avenue tree planting
- Establish a strong identity for the site through colour, graphics and signage which unifies and defines the park

2. Programme

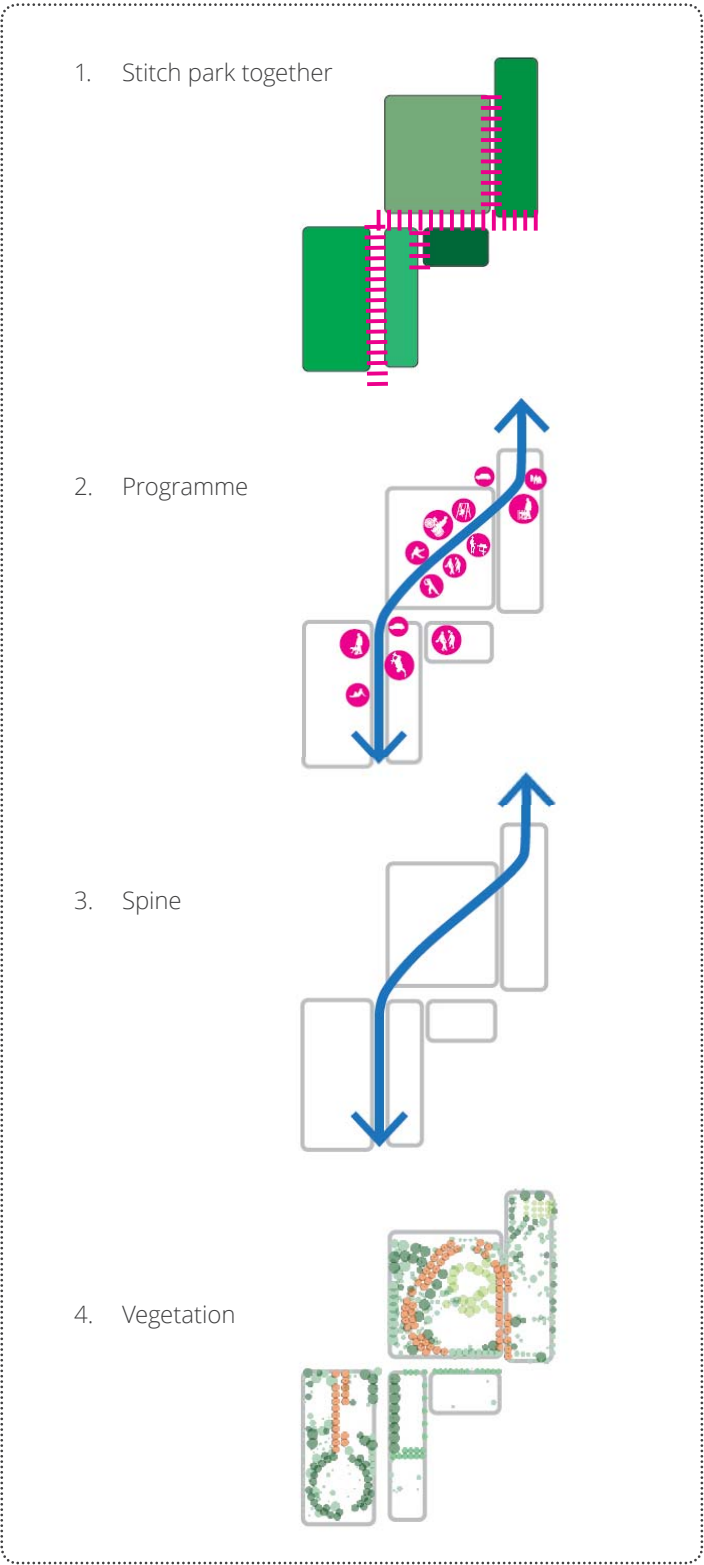
- Enhance existing park uses through improved amenities
- Introduce new uses / building programme compatible with community and stakeholder aspirations
- Provide activity for all age groups, increasing occupation and surveillance of the site resulting in increased safety

3. Spine

- Establish a clear path of travel through the site which links all activities within the park
- Increase lighting along spine creating a safe through site link during the night

4. Vegetation

- Retain all existing trees of cultural, heritage and ecological value
- Introduce proposed decorative overlay of deciduous and flowering trees adding colour and seasonal variance throughout the park
- Introduce a native understorey planting layer in appropriate locations to buffer park boundaries from noisy streetscapes
- Create planting diversity and wildlife habitat
- Consider lifecycle of trees through sucesion planting



Precedent Images

Urban Square



Bryant Park
New York



Lawn

Furniture



Grand Park, Los Angeles
Rios Clementi Hale Studio



Purple Pleasure
Carve Architects, Netherlands

Shade



Pirrama Park
Pyrmont, Sydney

Public Art



May Lane
St Peters, Sydney

Community Garden



Saint Joseph's Community Garden
Newtown, Sydney

Planting



Ornamental deciduous tree



Camperdown Memorial Rest Park
Sydney

Shared Zone



Surface applied graphic



Darling Quarter
Aspect Studios, Sydney, Australia



Charlotte Ammundsens Plads
1:1 Landskab, Denmark

Fitness



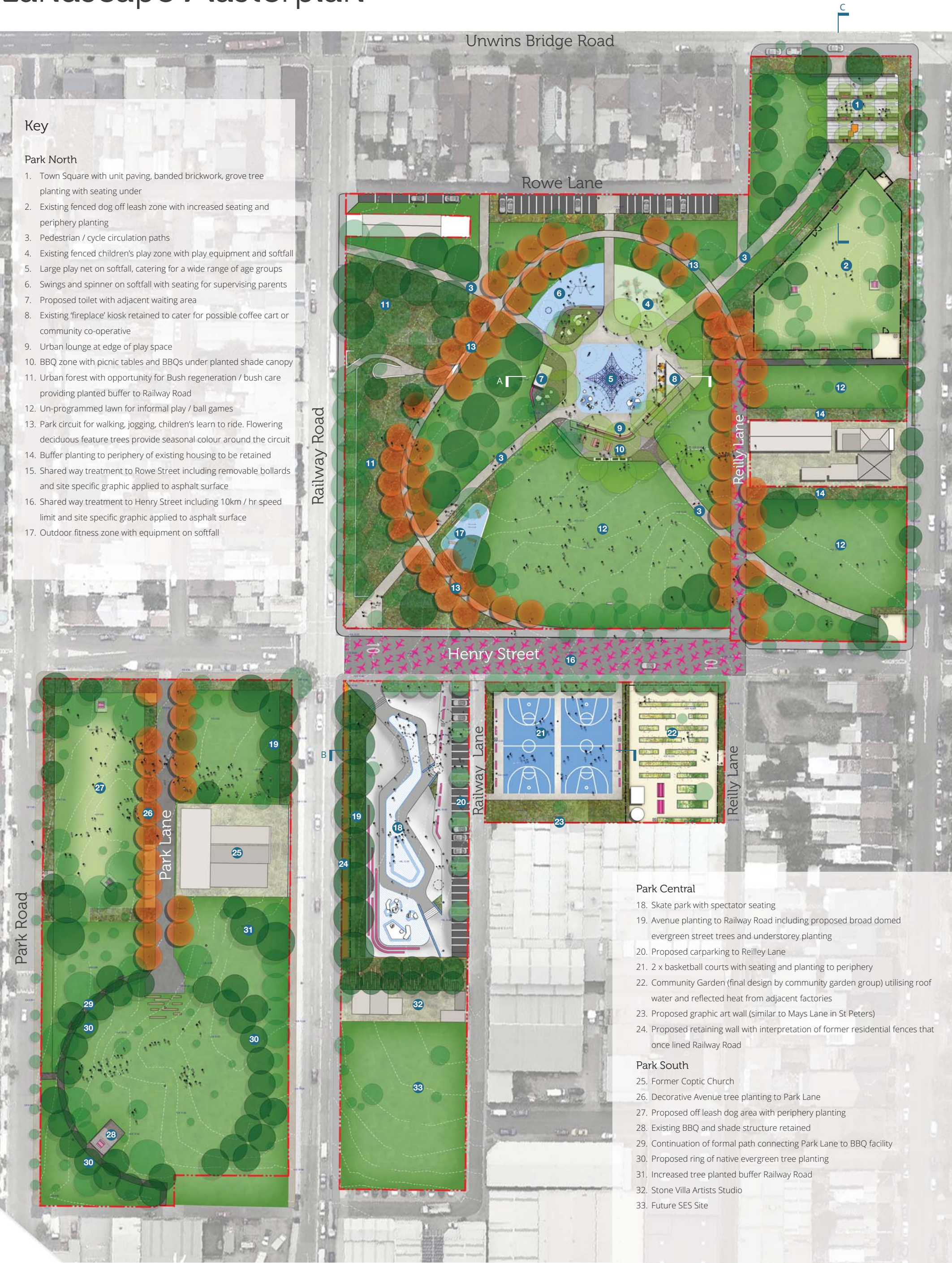
Prince Alfred Park
Sue Barnsley Design, Sydney

Youth facilities



UTA Student Housing Centennial Court
Arlington, Texas

Landscape Masterplan



Landscape Sections

Section A-A _ Children's Playground
1:200



Section B-B _ Youth Quarter
1:250



Section C-C _ Town Square
1:100

